

The methods of PLC version update (M70V)

1. Copy PLC file 'USERPLC' to compact flash card.



2. Insert compact flash card to slot on rightmost of monitor.



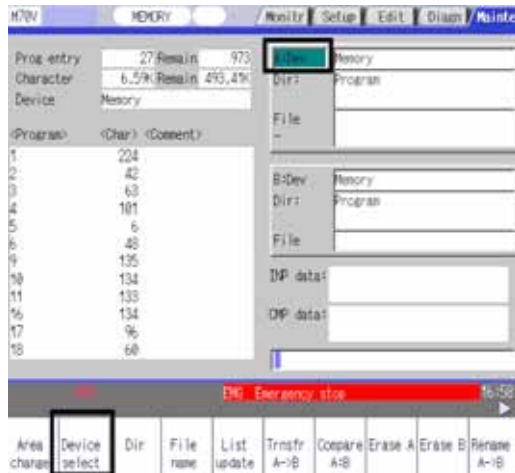
4. Press the function key [MAINT]



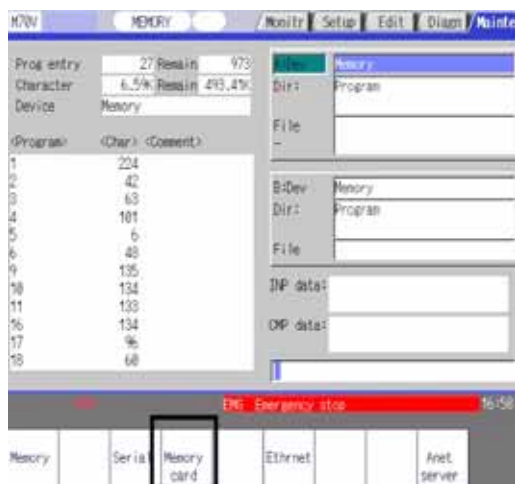
5. Press the soft key [Input/output]



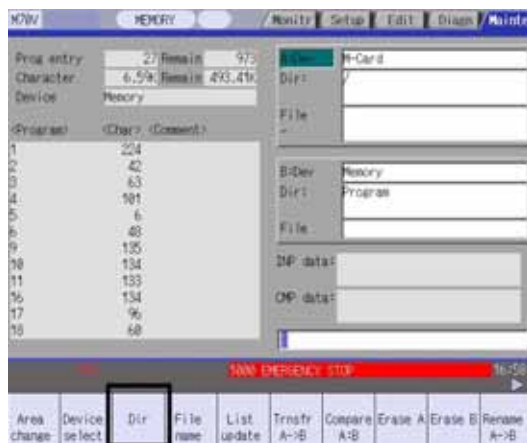
6. Press the soft key [Device select]



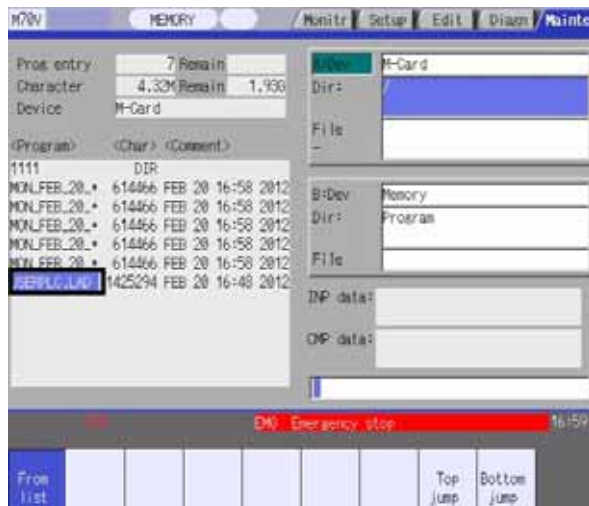
7. Press the soft key [Memory Card]



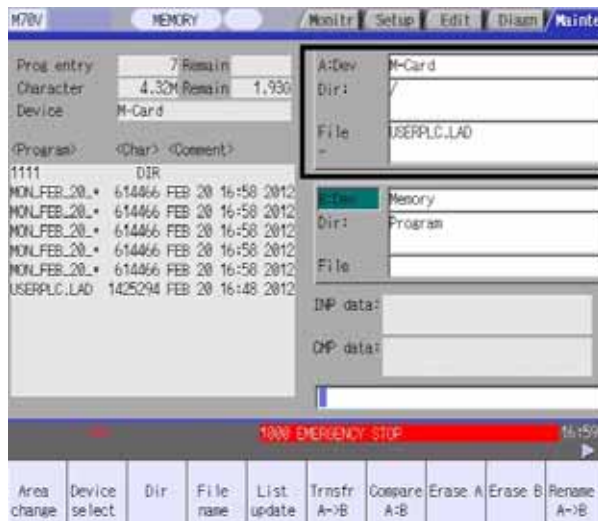
8. Press the soft key [Dir], then press soft key [Form list]



9. Moving cursor to the file USERPLC.LAD



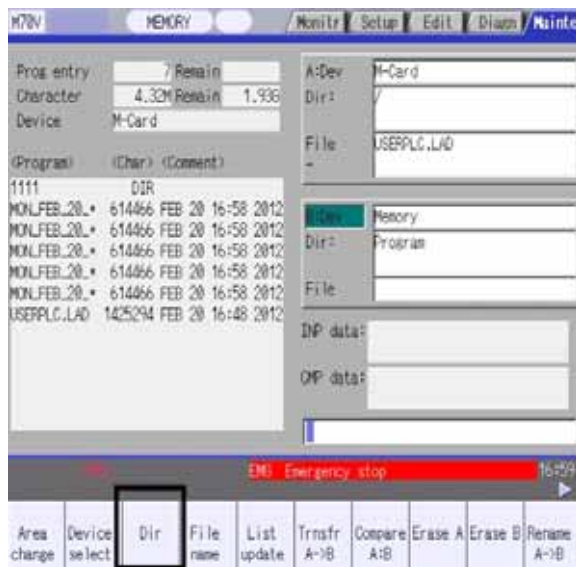
10. Press INPUT button two times, show the result on blow.



11. Press the soft key [Area change]



12. Press the soft key [DIR]



13. Input /LAD, Then press [INPUT] button.



14. Press the soft key [Trnsfr A-B]



15. Press INPUT button three times, show the result on blow.



15. Show Transfer complete, mean successful.

16. Power off/on, update finish.

17. Check PLC version is MMF1-A6.

